

COROLLA PROFESSIONAL



COROLLA PROFESSIONAL

Meet the Corolla Professional: The Hybrid Van for Your Business

The Corolla Professional is Toyota's innovative commercial vehicle. It has a hybrid system that helps your business go further with less. The Corolla Professional has two front seats and a big rubber-lined cargo area. Your load is safe and secure with the metal bulkhead that separates it from the cabin.

We've added the latest Toyota safety systems to keep you safe on every trip. Enjoy the smooth and powerful hybrid engine from the Corolla Hatchback and Touring Sports. It switches between electric energy and a mix of petrol and electric power, without plugging in.

The Corolla Professional has great fuel efficiency and low emissions. It helps your business to be more eco-friendly.

Scan the QR code to learn more about the Corolla Professional



ALL IMAGES CONTAINED IN THIS DOCUMENT ARE FOR ILLUSTRATIVE PURPOSES ONLY. LOCAL SPECIFICATION MAY VARY.

COROLLA PROFESSIONAL



PERFORMANCE AND EFFICENCY

ENGINE DETAILS	1.8 HEV
ENGINE (cc)	1798
ACCELERATION 0-100KM/H (s)	9.4
MAX POWER (hp)	140
MAX TORQUE (Nm @ rpm)	142
MAX POWER (kW @ rpm)	103

ENVIROMENTAL PERFORMANCE	1.8 HEV
CO ₂ (g/km)	104
FUEL (l/100km combined)	4.6

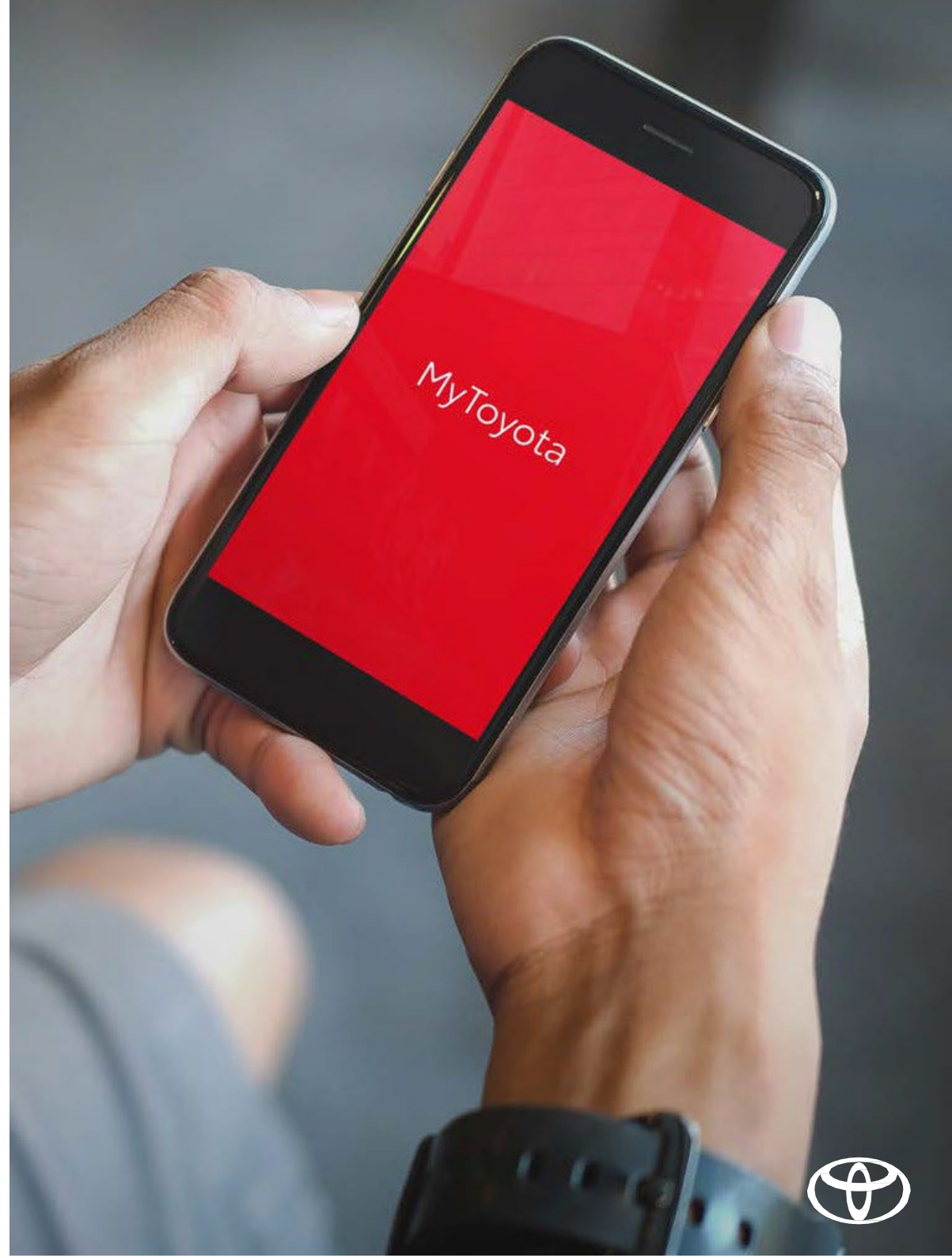
DIMENSIONS	1.8 HEV
HEIGHT (mm)	1460
LENGTH (mm)	4650
WIDTH (mm)	1790
MAX BOOT CAPACITY (l)	596
PAYLOAD (KG)	425



ALWAYS ON THE GO, ALWAYS CONNECTED

The intelligent cockpit keeps everything in sync between your car and smartphone. Designed to make driving easier, the My Toyota App on your smartphone opens up a world of connectivity.

Scan the QR code to learn more about the My Toyota App.



TOYOTA

MANUFACTURER'S WARRANTY

For peace of mind Toyota manufacturer's warranty ensures that every trip runs smoothly with:

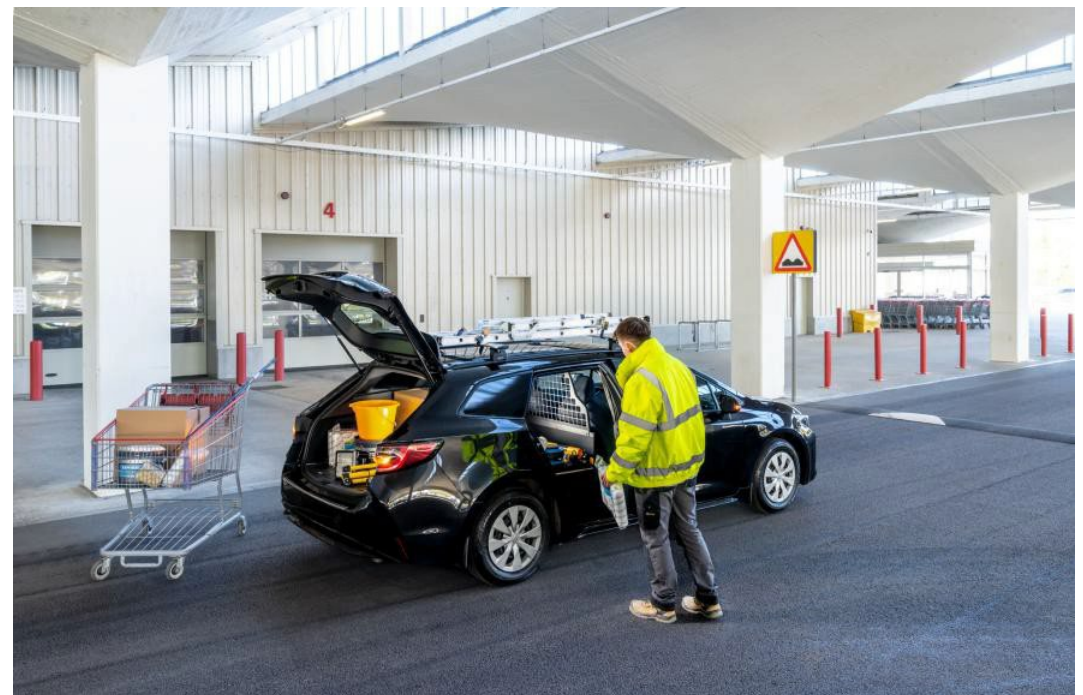
Manufacturer's Warranty

- 3yrs/100,000km - Manufacturer's Warranty
- 3yrs/unlimited mileage - Surface Rust/Paintwork
- 12yrs/unlimited mileage - Corrosion Perforation

Hybrid Warranty

- 5yrs/100,000km - All Hybrid Components (Including Hybrid Battery)
- Up to 15yrs/unlimited mileage Hybrid Battery Warranty once serviced with a Toyota Dealer or Authorised Repairer

For further warranty details contact your Local Toyota Dealer.



TOYOTA RELAX

Toyota Relax is a testament to the confidence we place in the quality of our vehicles. After your manufacturer's warranty finishes, you can still feel complete peace of mind, with a new 12 month or 15,000km Toyota Relax warranty if you service your vehicle with us. So you can rest assured that your car is in safe hands with expert technicians, who only use genuine parts. So your Toyota stays 100% Toyota.

If you choose Toyota to service your vehicle, we'll reward your loyalty. Whenever you choose to service with us, you are eligible for a new Toyota Relax warranty - up to 10 years vehicle age or 185,000km (whichever comes first) after the expiration of the manufacturer's warranty. See Toyota Website (www.toyota.ie/relax) for more details



COROLLA

PROFESSIONAL



Safety

- Toyota Safety Sense 3 (TSS3)
 - Supplemental Restraint System (SRS) airbags - 7 airbags
 - Pre-Collision System with Intersection Collision Avoidance support
 - Pre-Collision System with Pedestrian & daytime Cyclist and Motorbike detection
 - Front-to-front Oncoming Car and Motorbike detection (day) on Pre-Collision system
 - Emergency Driving Stop System (EDSS)
 - Proactive Driving Assist (PDA)
 - Emergency Steering Assist on Pre-Collision system
- Lane Departure Alert with Steering Control
- Intelligent Adaptive Cruise Control (iACC)
- Occupant Detection
- Rear-view camera
- Road Sign Assist
- Lane Trace Assist

Nitrogen Oxides (NOx)	3.5 mg/km
Fuel Consumption Combined (Wltp)	4.5 l/100km
CO ₂ Combined (Wltp)	104 g/km
Annual Road Tax	€333
Braked Towing Capacity	750 kg

Interior & Instrumentation

- 3-spoke urethane steering wheel
- 7" Coloured TFT Information Display
- Cargo area side glass window blanking

Convenience

- Follow-me-home headlights
- Dusk sensor
- Front armrest
- Dual-zone climate control
- Illuminated entry system, room & map lamp
- Dual-level deckboard
- 12V power outlets - 1x front, 1x boot

Exterior & Visibility

- LED headlamps
- Automatic High Beam
- Black roof rails
- Power-adjustable, heated door mirrors
- Shark-fin antenna

Audio & Nav

- 8" Toyota Smart Connect Multimedia System
- Bluetooth® hands-free system
- 6 speakers
- MyToyota Connected Services
- Smartphone Integration with Wireless Apple CarPlay™ & Wired Android Auto™*
- Smart voice assist
- Cloud Navigation
- USB Ports (1 x Front, Type C)

Seats

- Fabric Upholstery
- Height-adjustable driver seat

Wheels

- 16" steel wheels with alloy-look wheel cover (5-double spoke)
- Tyre Repair Kit

*Apple CarPlay is a trademark of Apple Inc.

COROLLA PROFESSIONAL

COROLLA PROFESSIONAL

EXTERIOR COLOURS



Pure White (040)

Atomic Silver (1L0)

Night Sky Black (209)

* Images are for illustrative purposes only

COROLLA PROFESSIONAL



INTERIOR TRIMS

Black fabric with grey stitching is now available with a unified black instrument panel that delivers a fresh image.



Black Fabric with Grey Stitching

KEY ACCESSORIES



Scan QR code for more on accessories.

COROLLA PROFESSIONAL CARE PACK



REAR BUMPER PROTECTION PLATE

Designed to protect the rear bumper paintwork against scratching when sliding heavy or awkward loads into the boot. It is also particularly effective for guarding the paintwork of the boot area.



FRONT & REAR MUD GUARDS

Designed to minimise water, mud and stones spraying onto your car's body.



ALUMINIUM SCUFF PLATES

Genuine scuff impression of style while also serving a very practical purpose of plates for the door sills create an immediate protecting the sill paintwork.

ADDITIONAL ACCESSORIES



FIXED TOW BAR

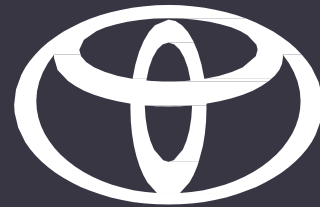
The towing hitch gives you ideal capacity to tow a trailer. It is designed for the Toyota Corolla Professional and has a tough anti-corrosion surface treatment.



FRONT WIND DEFLECTORS

Wind deflectors are ideal if you like to drive with the windows open. They are custom designed to match the aerodynamic contours of your vehicle and work by diverting airflow to ensure that you and your passengers are not troubled by excessive wind movement and noise.





BUILT FOR A **BETTER** WORLD

To the best of our knowledge, all information in this product guide is correct at the time of going to print. Details of specifications and equipment provided in this product guide are subject to local conditions and requirements and may, therefore, vary from models available in your area. Please enquire with your local dealer for details on your local specifications and equipment. Vehicle body colours may differ slightly from the printed photographs in this Product Guide. Toyota Ireland reserves the right to alter any details of specifications and equipment without prior notice. © 2024 by Toyota Ireland. No part of this publication may in any way be reproduced without the prior written approval of Toyota Ireland.

